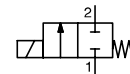




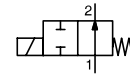
# SOLENOID VALVES

direct operated  
for high pressure fluids  
1/4

NC



NO



2/2  
Series  
262

## FEATURES

- Valves do not require a minimum operating pressure and have a high operating pressure as indicated
- Valve operation is not affected by mounting position
- The solenoid valves satisfy all relevant EC directives

## GENERAL

Differential pressure See «SPECIFICATIONS» [1 bar =100 kPa]  
Maximum viscosity 65 cSt (mm<sup>2</sup>/s)  
Response time 5 - 25 ms

fluids (*)	temperature range (TS)	seal materials (*)
air, inert gas, water, oil	-20°C to +90°C -20°C to +40°C	NBR (nitrile) UR (cast urethane)

## MATERIALS IN CONTACT WITH FLUID

(\*) Ensure that the compatibility of the fluids in contact with the materials is verified

Body Brass  
Core tube Stainless steel  
Core and plugnut Stainless steel  
Springs Stainless steel  
Seat Brass  
Seals NBR  
Disc NBR or UR  
Disc holder (NO function) PA  
Shading coil Copper

## ELECTRICAL CHARACTERISTICS

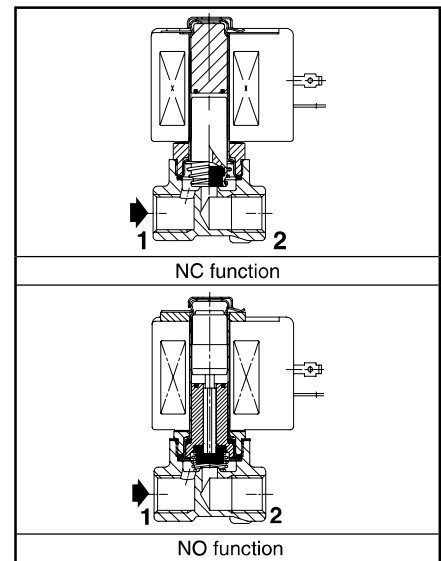
Coil insulation class F  
Connector Spade plug (cable Ø 6-10 mm)  
Connector specification ISO 4400 / EN 175301-803, form A  
Electrical safety IEC 335  
Electrical enclosure protection Moulded IP65 (EN 60529)  
Standard voltages DC (=) : 24V - 48V  
AC (~) : 24V - 48V - 115V - 230V / 50 Hz  
(Other voltages and 60 Hz on request)

prefix option	power ratings				operator ambient temperature range (TS) (C°)	replacement coil		type <sup>(1)</sup>
	inrush ~		holding ~			~	=	
	(VA)	(VA)	(W)	(W)		230 V/50 Hz	24 V DC	
SC	34	15,6	6	7 / 9,7	-20 to +75	400325-117	400325-142	01
	30	22,5	9	9,5/15,3	-20 to +50	400325-217	400325-242	01
	55	23	10,5	9/11,2	-20 to +75	400425-117	400425-142	02
	78	35	16,7	-	-20 to +50	400425-217	-	02
	-	-	-	14/19,7	-20 to +25	-	400425-342	-

<sup>(1)</sup> Refer to the dimensional drawings on the following page.

## SPECIFICATIONS

pipe size	orifice size	flow coefficient Kv	operating pressure differential (bar)						power coil (W)		catalogue number	options						
			max. (PS)									maintained man. operator	FPM	EPDM	CR	PTFE		
			min.	air (*)		water (*)		oil (*)										
G	(mm)	(m <sup>3</sup> /h) (l/min)									~/=							
<b>NC - Normally closed, NBR seals and disc</b>																		
1/4	1,2	0,05	0,8	0	50	35	50	35	35	35	6	9,7	SCG262C019	-	V	E	J	T
					25	10	25	8	11	8	6	9,7	SCG262C020	-	V	E	J	T
	2,4	0,17	2,8	0	35	15	35	10	20	10	9	15,3	SCG262C021	-	V	E	J	T
					9	4	11	4	6	4	6	9,7	SCG262C022	MO	V	E	J	T
	3,2	0,3	5	0	15	7	16	6	11	6	9	15,3	SCG262C023	MO	V	E	J	T
					20	5	20	4	13	4	10,5	11,2	SCG262D232	MO	V	E	J	T
					12	2,5	13	2,5	10	3	10,5	11,2	SCG262C202	MO	V	E	J	T
	5,6	0,62	10,3	0	6,5	1,7	6,5	1,7	6,5	1,7	10,5	11,2	SCG262C208	MO	V	E	J	T
					2,5	1,2	3,0	1,3	2,5	1,3	6	9,7	SCG262C013	MO	V	E	J	T
	7,1	0,82	13,7	0	1,8	1	2,5	1	1,9	1	6	9,7	SCG262C090	MO	V	E	J	T
					4	1,2	5	1	4	1,2	10,5	11,2	SCG262C210	MO	V	E	J	T
					6	1,7	6,5	1,3	6	1,3	16,7	19,7	SCG262B212	-	V	E	J	T
<b>NC - Normally closed, NBR seals and UR disc</b>																		
1/4	1,2	0,05	0,8	0	100	32	100	32	75	30	10,5	11,2	SCG262D200	MO	-	-	-	T
<b>NO - Normally open, NBR seals and disc</b>																		
1/4	3,2	0,3	5	0	9	5,5	7	4	6,5	4	10,5	11,2	SCG262A262	-	V	E	J	T
	4	0,43	7,2	0	5,5	3	5	2	4	2	10,5	11,2	SCG262A263	-	V	E	J	T
	5,6	0,73	12,2	0	3	1,7	2,5	1,3	2,5	1,3	10,5	11,2	SCG262A264	-	V	E	J	T
	7,1	0,82	13,7	0	2	1	1,7	1	1,3	1	10,5	11,2	SCG262A265	-	V	E	J	T
<b>NO - Normally open, NBR seals and UR disc</b>																		
1/4	1,2	0,05	0,8	0	50	35	50	45	50	50	10,5	11,2	SCG262A260	-	-	-	-	T
	2,4	0,17	2,8	0	20	13	20	10	10	9	10,5	11,2	SCG262A261	-	-	-	-	T



00031GB-2011/R01  
Availability, design and specifications are subject to change without notice. All rights reserved.

All leaflets are available on: [www.asconumatics.eu](http://www.asconumatics.eu)

V225-1

**OPTIONS**

- Valves can also be supplied with FPM (fluoroelastomer), EPDM (ethylene-propylene), CR (chloroprene) and PTFE seals and discs. Use the appropriate optional suffix letter for identification
- Waterproof enclosure with embedded screw terminal coil according to protection class IP67, CEE-10
- Explosionproof enclosures for use in zones 1/21-2/22, categories 2-3 to ATEX Directive 94/9/EC (see "Explosionproof solenoids" section)
- Electrical enclosures according to "NEMA" standards are available
- Compliance with "UL", "CSA" and other local approvals available on request
- Mounting brackets, suffix MB
- Other pipe connections are available on request
- Plug with visual indication and peak voltage suppression or with cable length of 2 m (see Solenoids, Coils & Accessories section)

**INSTALLATION**

- The solenoid valves can be mounted in any position without affecting operation
- Solenoid valves have 2 mounting holes in body
- Pipe connection identifier is G = G (ISO 228/1)
- Installation/maintenance instructions are included with each valve

**SPARE PARTS KIT & ACCESSORIES**

catalogue number	spare parts kit no.		mounting bracket no.
	~	=	
SCG262C013/090	C302022	C302068	254573-001
SCG262C019/020/021/022/023	C302018	C302068	-
SCG262A260/261	C302045	C302076	206525-001
SCG262A262/263/264/265	C302051	C302080	254573-001
SCG262D200	C304350	C304350	206525-001
SCG262C202/208/210	C304354	C304354	254573-001
SCG262B212/D232	C304354	C304354	206525-001

<sup>(1)</sup> Standard prefixes/suffixes are also applicable to kits.  
 - Not available

**ORDERING EXAMPLES:**

SC	G	262	C	010	230V / 50 Hz
SC	G	262	C	020	MO 115V / 50 Hz
SC	G	262	C	022	V 24V / DC
SC	G	262	D	200	T 230V / 50 Hz

prefix      pipe thread      basic number      voltage      suffix

**ORDERING EXAMPLES KITS:**

C302045 <sup>(1)</sup>	
C302051	V
C302051	E

basic number      suffix

**DIMENSIONS (mm), WEIGHT (kg)**



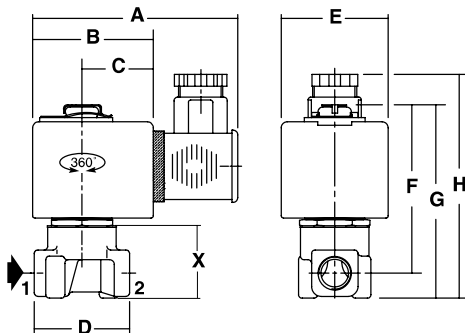
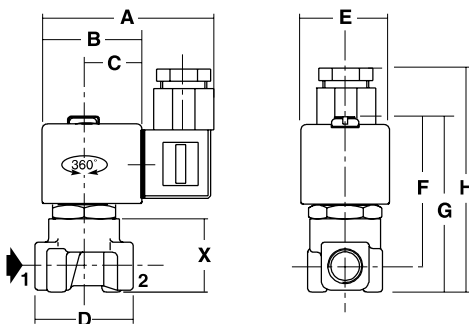
**TYPE 01-02**  
 Prefix "SC" Solenoid  
 Epoxy moulded  
 IEC 335 / ISO 4400  
 IP65

Type 01: SCG262C019/020/021/022/023/013/090  
 Type 02: SCG262D232/C202/C208/C210/B212/D200



**TYPE 02**  
 Prefix "SC" Solenoid  
 Epoxy moulded  
 IEC 335 / ISO 4400  
 IP65

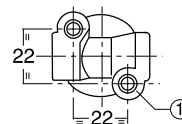
SCG262A262/A263/A264/A265/A260/A261



① 2 mounting holes Ø M4, depth 6 mm

type	prefix option	A	B	C	D	E	F	G	H	X	weight <sup>(2)</sup>	
											NC	NO
01	SC	75	45	27	40	39	65	75	92	30	0,4	-
02	SC	80	50	30	40	45	69	80	96	30	0,45	0,5

<sup>(2)</sup> including coil and connector.



bottom view

All leaflets are available on: [www.asconumatics.eu](http://www.asconumatics.eu)